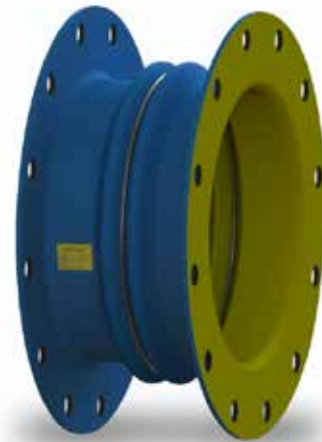


# Garlock Expansion Joint ABRA-LINE™ Style 4394

Engineered for Abrasive Applications

The ABRA-LINE™ family of products was developed for highly abrasive applications typically found in the power generation, fertilizer, mining and chemical industries. These may include flue gas desulphurization systems, phosphate mining, dry bulk power transfer systems, tailings and slurry applications. Our proprietary urethane formula was designed to reduce wear and extend service life.

This multi-convoluted, lightweight expansion joint is designed for lower pressure applications that require significant amounts of movement, axially and/or laterally. Its low spring rates make it ideal for load cell and shaker boot applications.



## BENEFITS

- » Proprietary urethane formula for abrasive applications
- » Lightweight design installs easily and costs less to ship
- » Can be custom designed for even greater movement capabilities
- » Choice of construction materials suitable for wide range of temperatures
- » Available in flanged or sleeve type design, up to 48" max. (1,219mm) I.D.

\*Contact Garlock for larger I.D. sizes




## PRESSURE

- » Without external reinforcing rings: up to 3 psi (0.2 bar)
- » With external reinforcing rings: up to 15 psi (1.0 bar)

## VACUUM

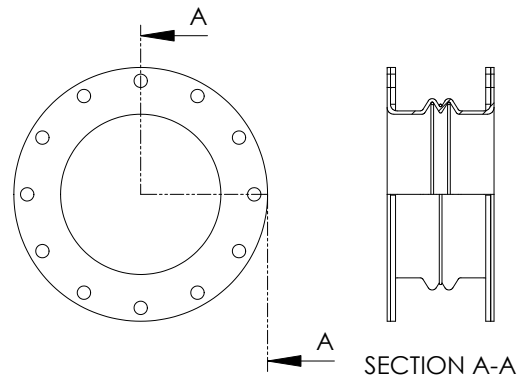
- » Without internal reinforcing rings: up to 3 inches (75mm) Hg
- » With internal reinforcing rings: up to 15 inches (381mm) Hg

## MOVEMENT CAPABILITIES PER CONVOLUTION

Type Movement	Pipe Size		Movement	
	Inch	mm	Inch	mm
	2-6	50-150	3/4	19
	8-10	200-250	7/8	22
	12-18	300-450	1-1/8	28
	20-up	500-up	1-5/8	41
	2-6	50-150	5/8	16
	8-10	200-250	3/4	19
	12-18	300-450	1	25
	20-up	500-up	1-1/4	31
	2-6	50-150	5/8	16
	8-10	200-250	3/4	19
	12-18	300-450	1	25
	20-up	500-up	1-1/4	31

## ALTERNATE COVER MATERIALS

- » Neoprene
- » Nitrile
- » CSM
- » EPDM
- » Fluoroelastomer

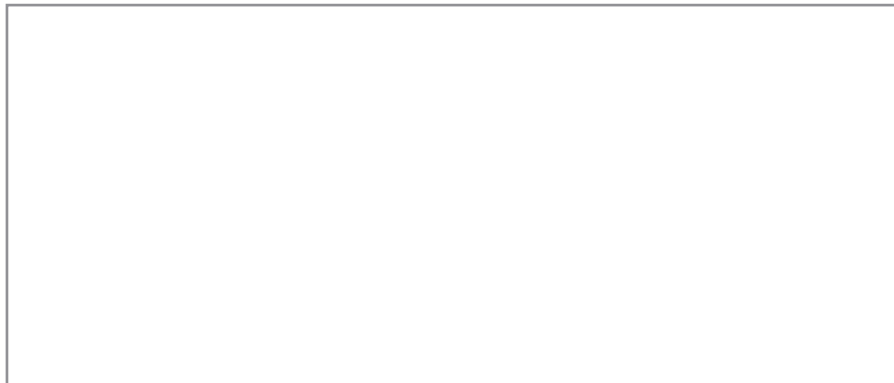


## TEMPERATURE

- » Standard Chlorobutyl/Polyester w/ urethane +180°F (82°C)

## OPTIONAL CONFIGURATIONS

- » Sleeve end connections
- » External and internal reinforcement rings
- » Extended face-to-face
- » Multiple convolutions for higher movements



EJ 9:35\_08.2014

### GARLOCK

an *EnPro* Industries family of companies

Tel: 1-877-GARLOCK / 315.597.4811

Fax: 800.543.0598 / 315.597.3216

www.garlock.com

Garlock Sealing Technologies

Garlock Rubber Technologies

GPT

Garlock PTY

Garlock do Brasil

Garlock de Canada, LTD

Garlock China

Garlock Singapore

Garlock Germany

Garlock India Private Limited

Garlock de Mexico, S.A. De C.V.

Garlock New Zealand

Garlock Great Britain Limited

Garlock Middle East