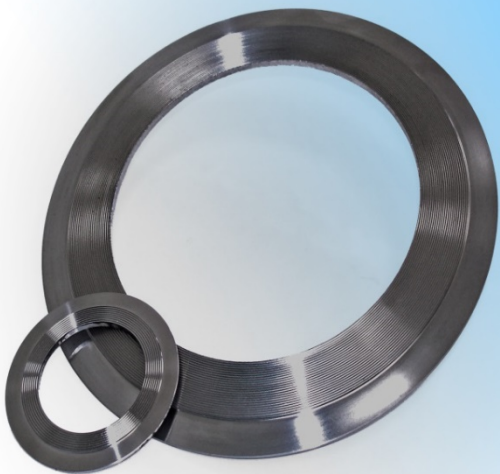




KLINGER MAXIPROFILE

Serrated Metal Gaskets



KLINGER MAXIPROFILE

Serrated Metal Gaskets

Core Design

- » Standard core design (Style LA) is parallel, which offers the advantages of even stress distribution across the gasket face.
- » Convex core designs (Style CA) are also available, which have a reduced depth of grooves towards the profile center.

General Properties

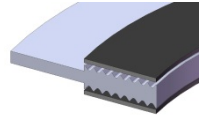
- » Wide range of seating stresses under which the seal is effected and maintained.
- » Can be used when there is insufficient bolt load to seal conventional gasket materials.
- » Easy to handle and fit.
- » Suitable for a wide rang of operating conditions.
- » The soft facing layer prevents damage to the flange.
- » Can be refurbished with a new facing layer and reused.

Applications

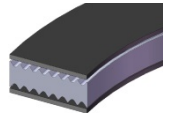
- » Heat exchanger and vessel applications
- » High and low temperatures
- » Pressures of up to 250 bar / 3625 psi
- » Low bolt loads
- » Small flange widths
- » Damaged flanges

Styles

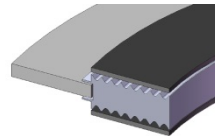
LA1 / CA1 – Integral centering ring



LA2 / CA2 – No centering ring



LA3 / CA3 – Floating centering ring



Materials

Facing Material	Max Temperature
Flexible Graphite	550°C / 1020°F
PTFE	260°C / 500°F
Mica	1000°C / 1830°F

Core Material	Max Temperature
Stainless Steel 304 & 316L	550°C / 1020°F
Alloys 400 & 200	600°C / 1110°F
Alloy 600	900°C / 1650°F
Alloys 625, 825 & B-2	450°C / 840°F
Titanium	350°C / 660°F

03182020

SIDNEY, OHIO
 2350 Campbell Road
 Sidney, OH 45365
 ☎ (937) 498-2222
 ✉ info@thermosealinc.com



www.thermosealinc.com

HOUSTON, TEXAS
 3803 S. Sam Houston Pkwy W.
 Houston, TX 77053
 ☎ (713) 997-8111
 ✉ info@thermosealinc.com